


Human CXCL5 Protein, His tag (Animal-Free)

Cat #: PRP1921

Size: 5 µg/20 µg/100 µg/1 mg

Product Information

	Product Name: Human CXCL5 Protein, His tag (Animal-Free)		
REF	Catalog Number: PRP1921	LOT	Lot Number: Refer to product label
	Purity: > 98 % as determined by SDS-PAGE		
	Storage: Store at -20°C		Preparation method: E.coli
	Shipping: The product is shipped at ambient temperature.		

Background: CXCL5 is a small cytokine belonging to the CXC chemokine family. CXC chemokines are particularly significant for leukocyte infiltration in inflammatory diseases. CXCL5 is produced following stimulation of cells with the inflammatory cytokines interleukin-1 or tumor necrosis factor-alpha. It also can be detected in eosinophils, and can be inhibited with the type II interferon. CXCL5 plays a role in reducing sensitivity to sunburn pain in some subjects, and is a potential target which can be utilized to understand more about pain in other inflammatory conditions like arthritis and cystitis. It stimulates the chemotaxis of neutrophils possesses angiogenic properties. It elicits these effects by interacting with the cell surface chemokine receptor CXCR2.

Sequence: Amino acid sequence derived from Human CXCL5 (Arg45-Asn114) (P42830) was expressed with 6×His tag at the N-terminus.

Protein length: The recombinant Human CXCL5 consists of 70 amino acids and predicts a molecular mass of 8 kDa.

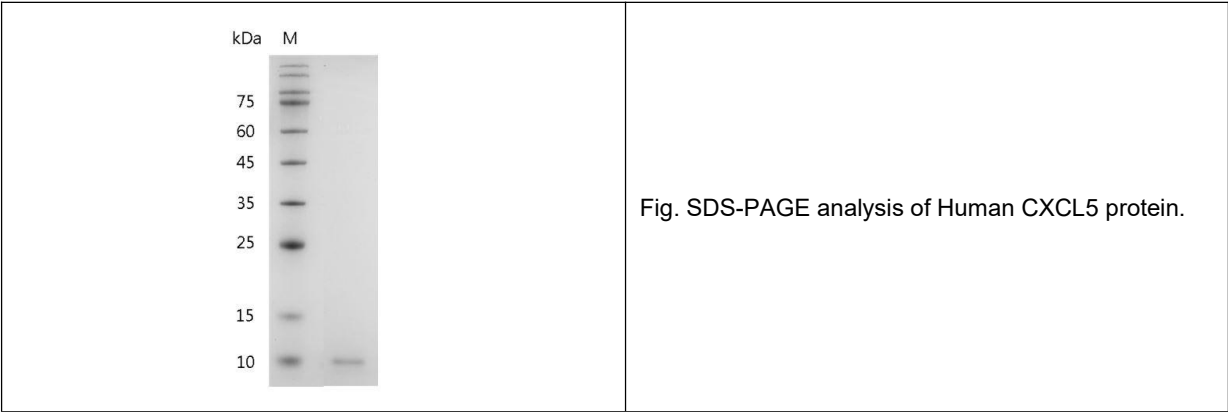
Biological Activity: Measure by its ability to chemoattract BaF3 cells transfected with human CXCR2. The ED₅₀ for this effect is <10 ng/mL.

Endotoxin: <0.1 EU per 1 µg of the protein by the LAL method.

Formulation: Lyophilized from PBS, pH 7.4.

Storage Instructions: Lyophilized protein product should be stored desiccated below -18°C. Upon reconstitution, the protein should be stored at 4°C between 2-7 days and for future use below -18°C. For long term storage it is recommended to add a carrier protein (5% HSA, 10% FBS or 0.1% BSA). Please prevent freeze-thaw cycles.

Usage notes: Always centrifuge tubes before opening. It is recommended to reconstitute the lyophilized recombinant protein to a concentration of 0.1-1 mg/mL using the buffer we provided, and keep at room temperature for at least 20 min to fully dissolve. Please avoid vortex vigorously.



Note: The product listed herein is for research use only and is not intended for use in human or clinical diagnosis. Suggested applications of our products are not recommendations to use our products in violation of any patent or as a license. We cannot be responsible for patent infringements or other violations that may occur with the use of this product.